

HASTINGS TRAMWAYS CLUB NEWS

JUNE 2004

No 28

COMMEMORATING TRAMS 2005

#####

Hastings Tramways Club prepares to commemorate in 2005 the opening of the first electric Tramway in Hastings in 1905-1929 by means of posters, photo's, paintings, model trams, displays, and events. It will give an insight into life at the turn of the last century with the introduction of 'as then' a new means of Transport that ordinary folk could afford. These new trams could take them from the town centre to places as far and as high as the Ridge following the road along to the Harrow Inn at Baldslow then continue down to Silverhill, via (Depot) or proceed further on to either Bohemia Road or London Road St Leonards and then onto the sea front heading towards West Marina Railway station off of Bexhill Road at the Bo-Peep P.H. A year later, Bexhill and as far as Cooden are also reached by the Hastings Tramcars.



Quaint rural trips along the Ridge in Hastings in those early days

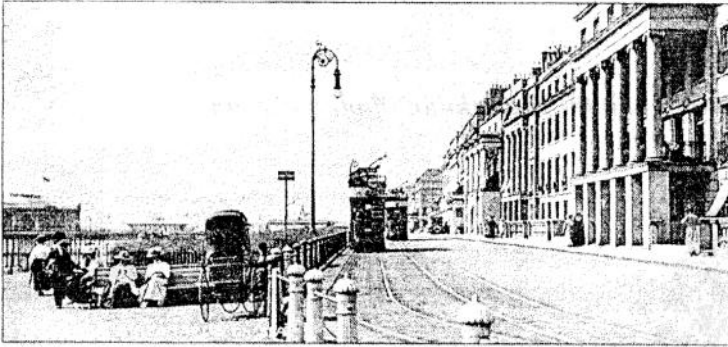
#####

LONDON 'O' gauge TRAMS at Robertsbridge

The model railway show held at Robertsbridge last April had the clubs acquired 'O' gauge layout on display with Phil Standen, myself, Bob Cole plus several other members helping to run the trams over the two day event. The layout and trams have been kept at the Standen's house for safe keeping for a number of years where Phil and his father have been keeping them in good order but having to move the layout from their top floor causes problems when negotiating the large sections down the stairs and then once down, loading it into the 'box' which we have used over the years to convey the layouts. The 'box' fits on top of the roof rack fitted on the car, but now the 'box' has seen better days and a new one has been built by Helen Brett of R.V.Rly for which we supplied the plywood to cover the timber frame she has built. The old box can be seen at Robertsbridge in use as a 'photo' booth and carries the number 1066. Since the exhibition the layout has been kept inside tram No 56 and in the future we hope to display it within the railway wagon.

HASTINGS TRAMWAYS CLUB NEWS

MAKING NEW TOP LIGHT WINDOW FRAMES



▲ MARINA, St Leonards: on the right of the picture stand the elegant buildings erected by James Burton, in the period 1828-1829, towards the eastern boundary of his new town. These were demolished late in 1935 to make way for the present Marine Court. On the left can be seen the most landward of the two pavilions of the St Leonards pier. This pier, designed by R. St George Moore and costing £30,000, was opened in October 1891 by Lord and Lady Brassey. It failed to survive the Second World War intact and its last vestiges were removed in February 1951. In the centre ground two trams pass each other with poles secured. Over-head tram wires were not permitted on the 'front line' until 1919.

Barry Enefer of Bexhill has kindly taken up my offer to remake some new top vent light window frames for the trams at his home in Bexhill. It is estimated that we will need a set which is twelve per tram. We have a number of original frames, enough to complete one tram, but they are a mixture from different trams and slightly differ in size, plus a number of them are in poor condition. Two of the new frames when ready will be used for the special original glass which has some interesting wording on it. I purchased the glass some years ago from a local antique dealer.

#####

A P.M.V. RAILWAY WAGON

Some minor work has been done on the newly acquired P.M.V. railway wagon such as oiling some of the metal parts and cutting off the seized bolts on the doors. John from Sidcup helped to remove some of the flaking paint at one end inside. Derek and I covered the roof with some old sheeting to help keep the worst of the weather out. There is a problem with what to do with the hundred or so batteries that have been left inside the wagon, they are of no use to us but we will have to dispose of them somehow, they are big and very heavy to move and with acid or water seeping from some of them it will make the job that much harder. We believe the batteries came from railway coaching stock and were stored in the wagon some years ago at the Tenterden end of the railway, rain water has poured in from gaping holes in the roof of the vehicle believed to have been caused by vandals setting about trying to wreck the wagon, smashing windows etc. It is thought the van would be a useful asset as it could be used to house our tram collections.

MUSEUM TO DISPLAY TRAMWAY ITEMS

Hastings old Town Museum will be having a special Hastings Tramways display in the coming year 2005 to mark the anniversary of the Hastings trams in 1905, I hope to be able to loan them the two top light windows which have wording on them.

MAIDSTONE 100 YEAR TRAM CELEBRATION

To celebrate the centenary of Maidstones trams an ex Maidstone Trolleybus has been taken around the old routes in Maidstone and has been on display in the high street much to the delight of the general public.